

EcoKai Environmental, Inc.

June 23, 2026
via email

Ms. Genell Hobbs
General Manager
Kinney County Groundwater Conservation District
Brackettville, TX 78882

SUBJECT: Automated Specific Conductivity Data Collection Package for June 2026 Board Meeting

President Robinson and General Manager Hobbs,

This memorandum transmits monitoring graphs for recently installed Specific Conductivity sensors for discussion and possible action at the June 2026 KCGCD Board meeting.

If you have any questions regarding this information, or if I can be of any additional assistance, please call me on my cellular at (432) 235-0498.

Respectfully

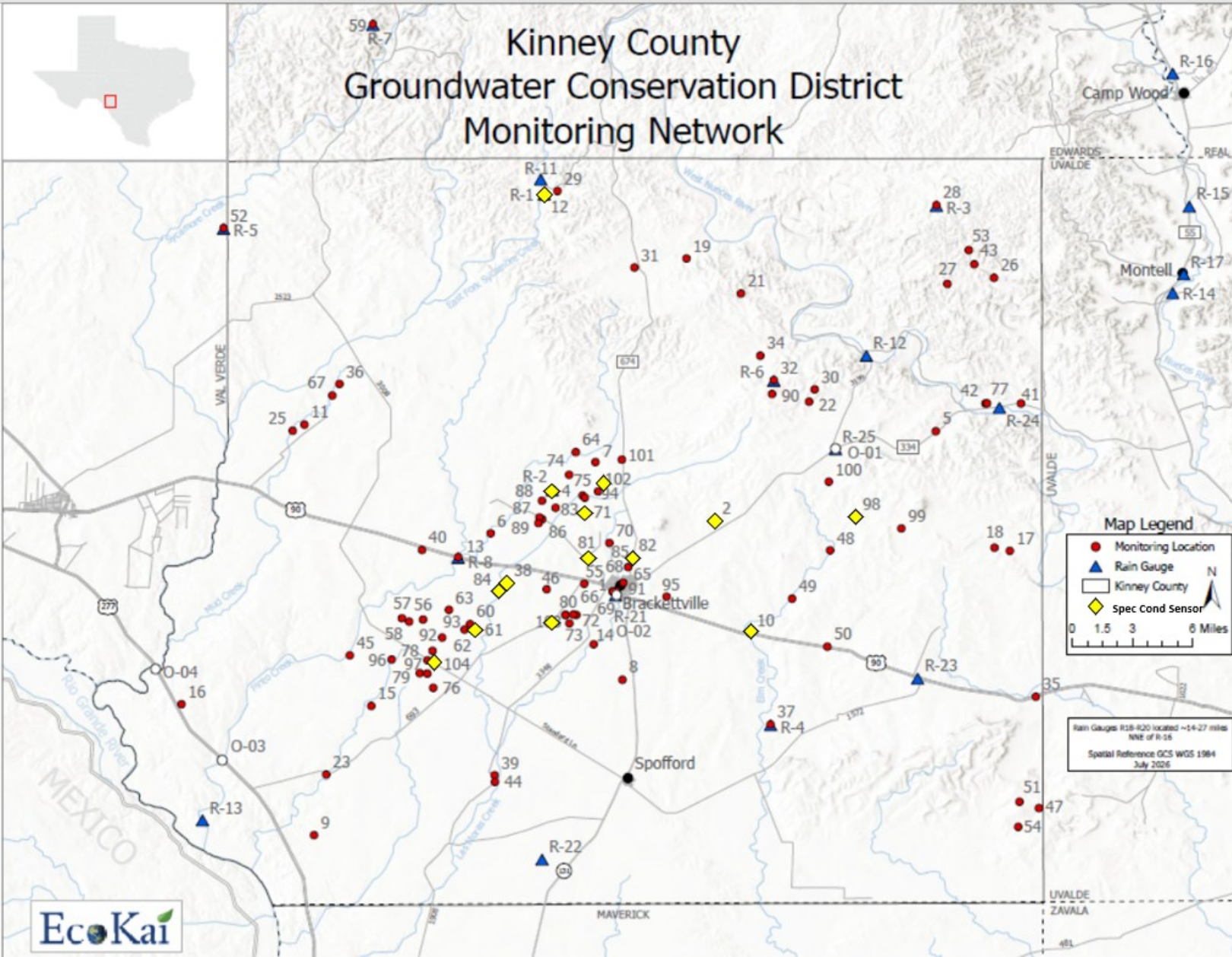
A handwritten signature in blue ink that reads "Jim Burton". The signature is stylized and cursive.

Jim Burton, PE
President / CEO – EcoKai

Attach: Specific Conductivity Data Graph Package



Kinney County Groundwater Conservation District Monitoring Network



Map Legend

- Monitoring Location
- ▲ Rain Gauge
- ▭ Kinney County
- ◆ Spec Cond Sensor

0 1.5 3 6 Miles

N

Rain Gauges R18-R20 located ~14-27 miles
NNE of R-16
Spatial Reference GCS WGS 1984
July 2026



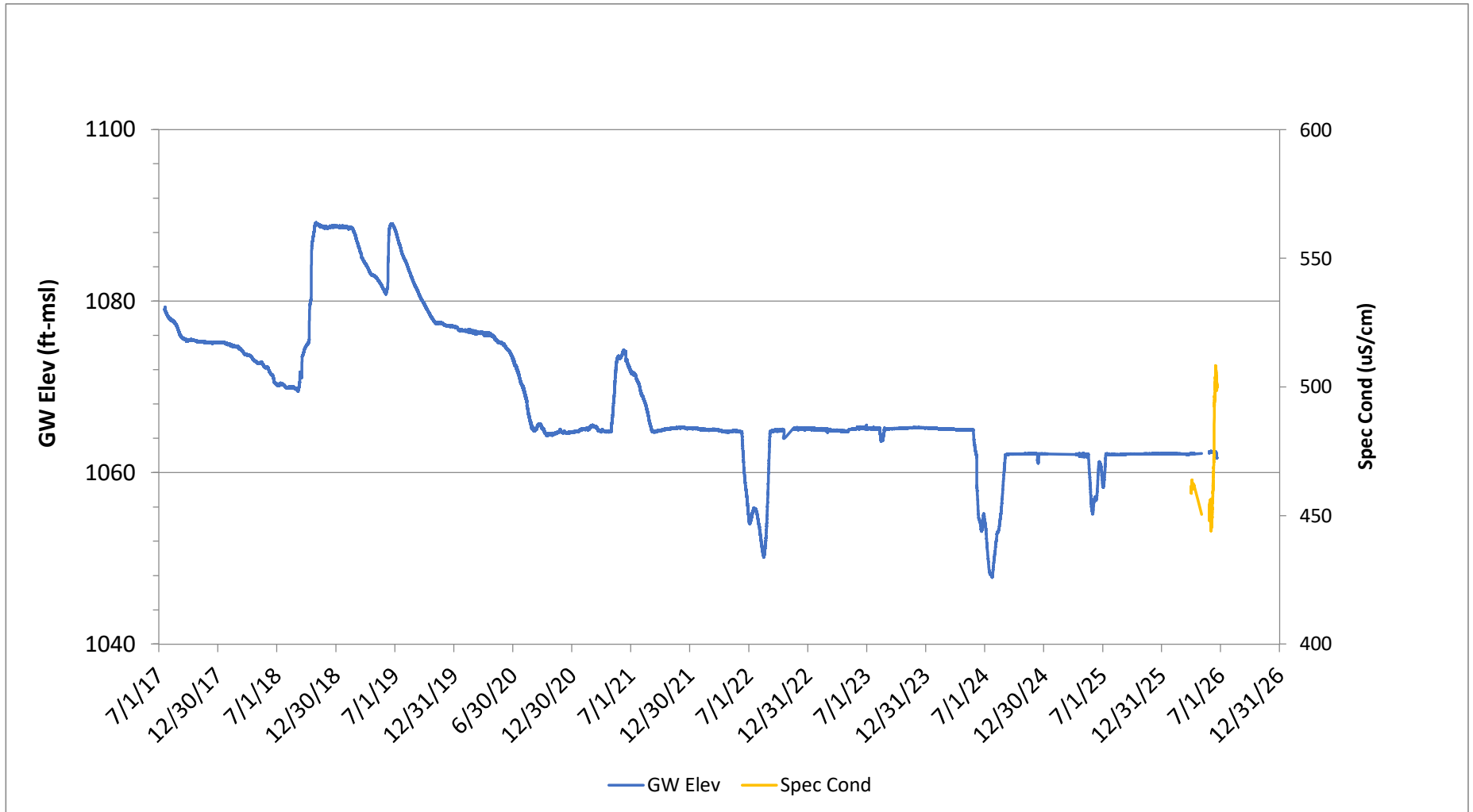
MAVERICK

UVALDE
ZAVALA

Old Bader Irrigation Well

TD > 500ft, RP = 1108 ft-msl

GW Elev (ft-msl)

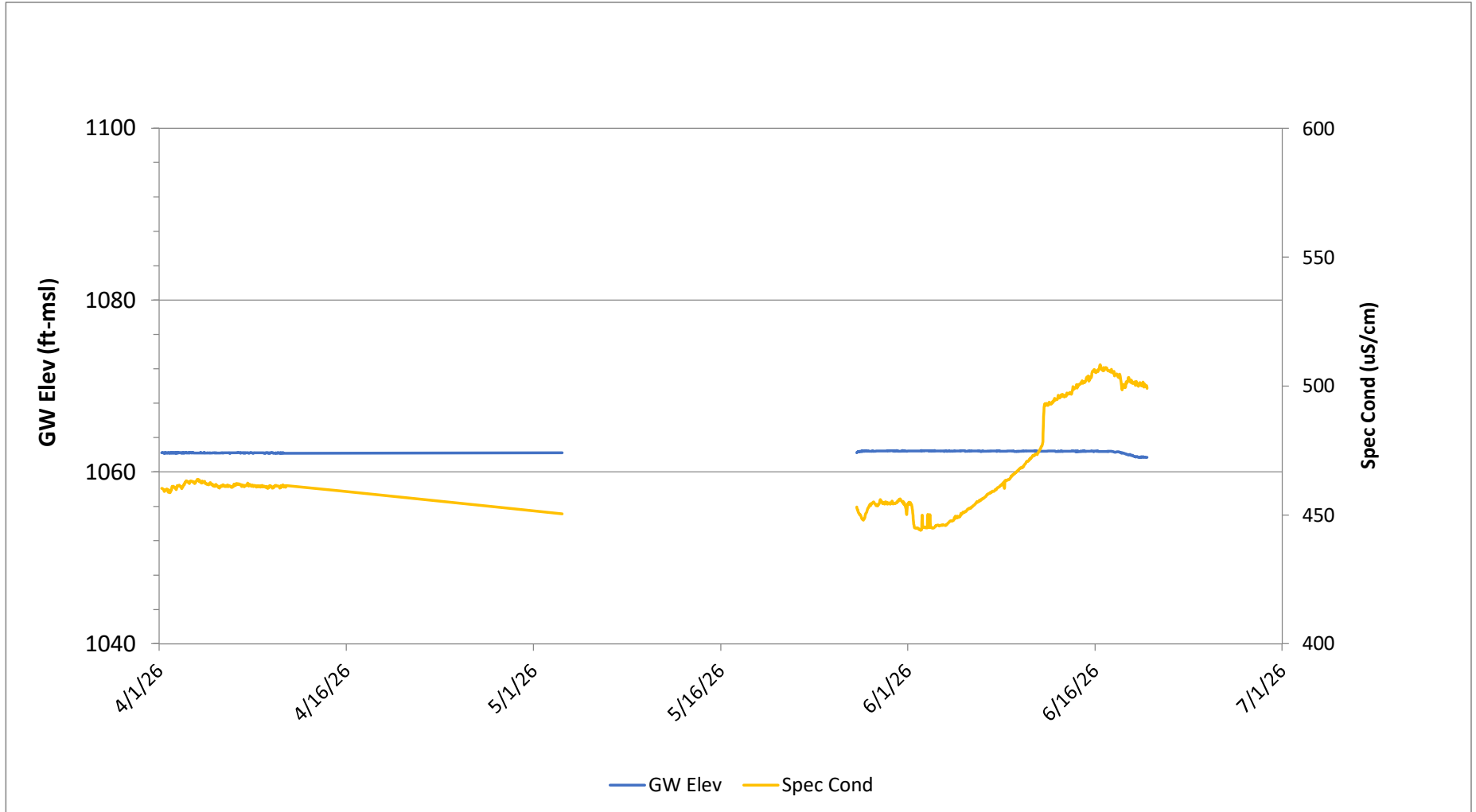


PRELIMINARY

Old Bader Irrigation Well

TD > 500ft, RP = 1108 ft-msl

GW Elev (ft-msl)

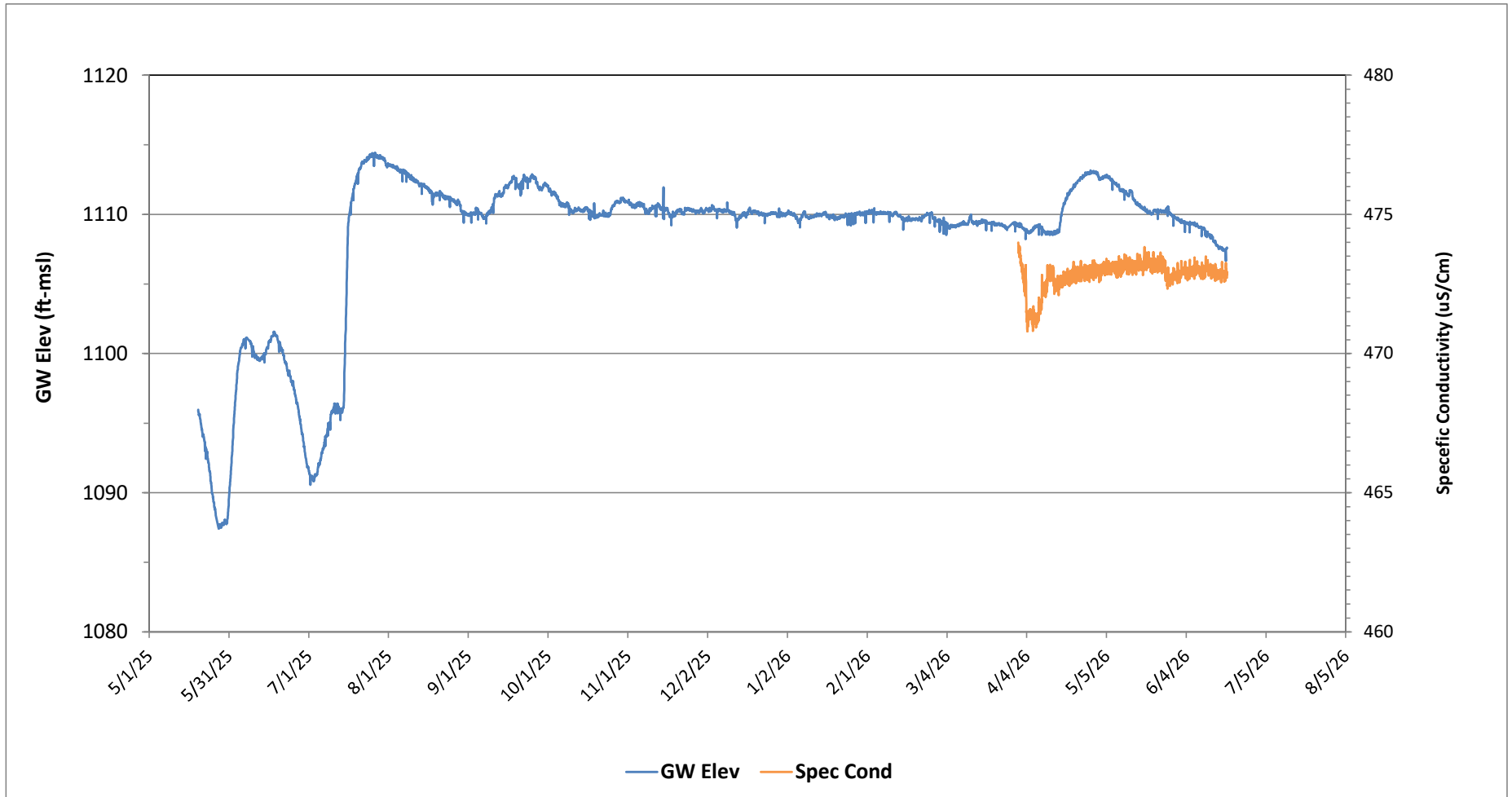


PRELIMINARY

Gomez Well No. 1

TD = 580 ft, RP = 1068 ft-msl, Edwards?

Groundwater Elevation (ft-msl)

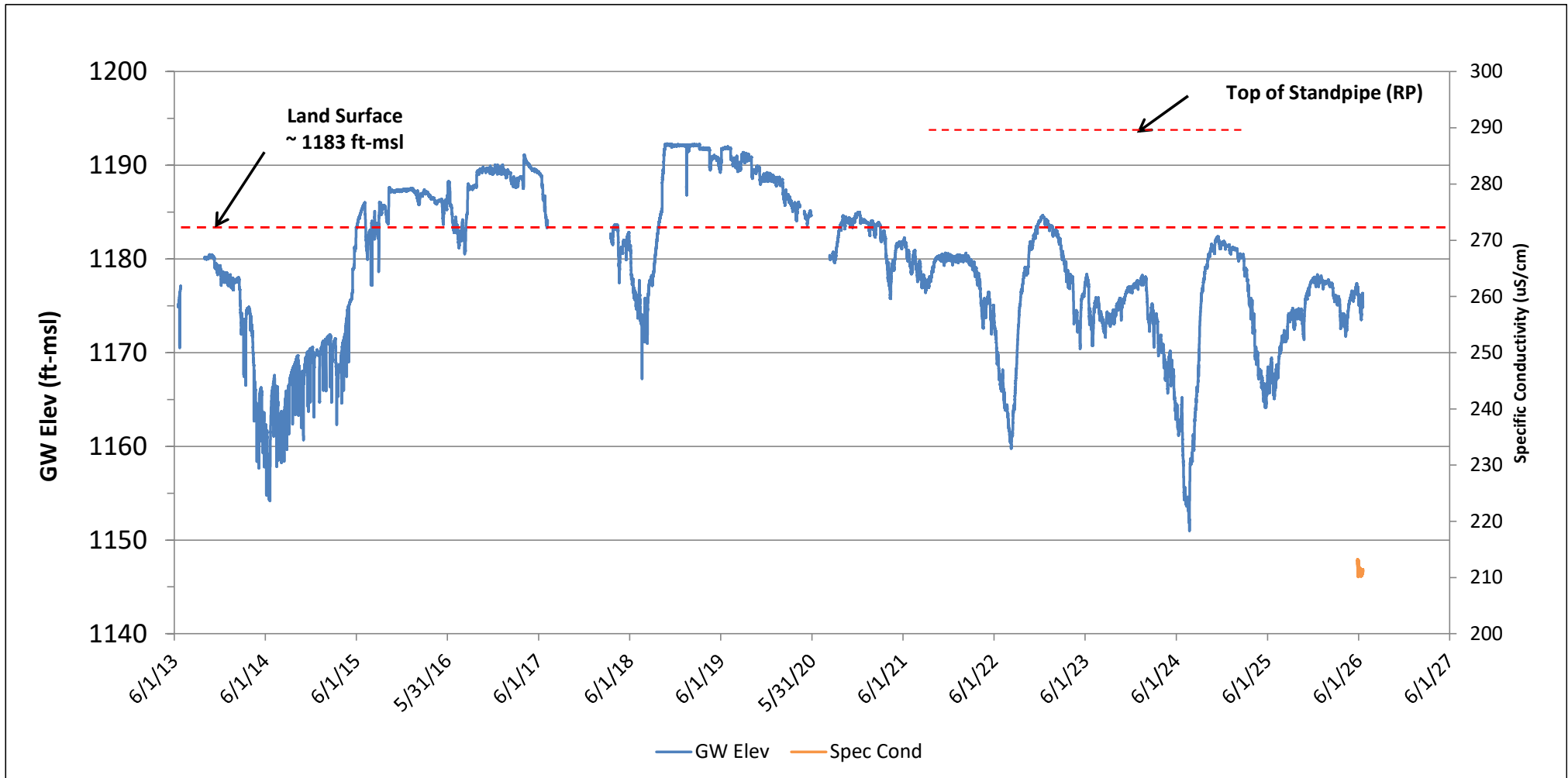


PRELIMINARY

EH12-01 Dooley Well

TD = 1112 ft, RP = 1183 ft-msl, TWDB No. 7037704

Groundwater Elevation (ft- msl)



PRELIMINARY

6/23/2026

Dooley Well

TD = 1112 ft, RP = 1183 ft-msl, Edwards, TWDB No. 7037704

GW Elev (ft- msl)

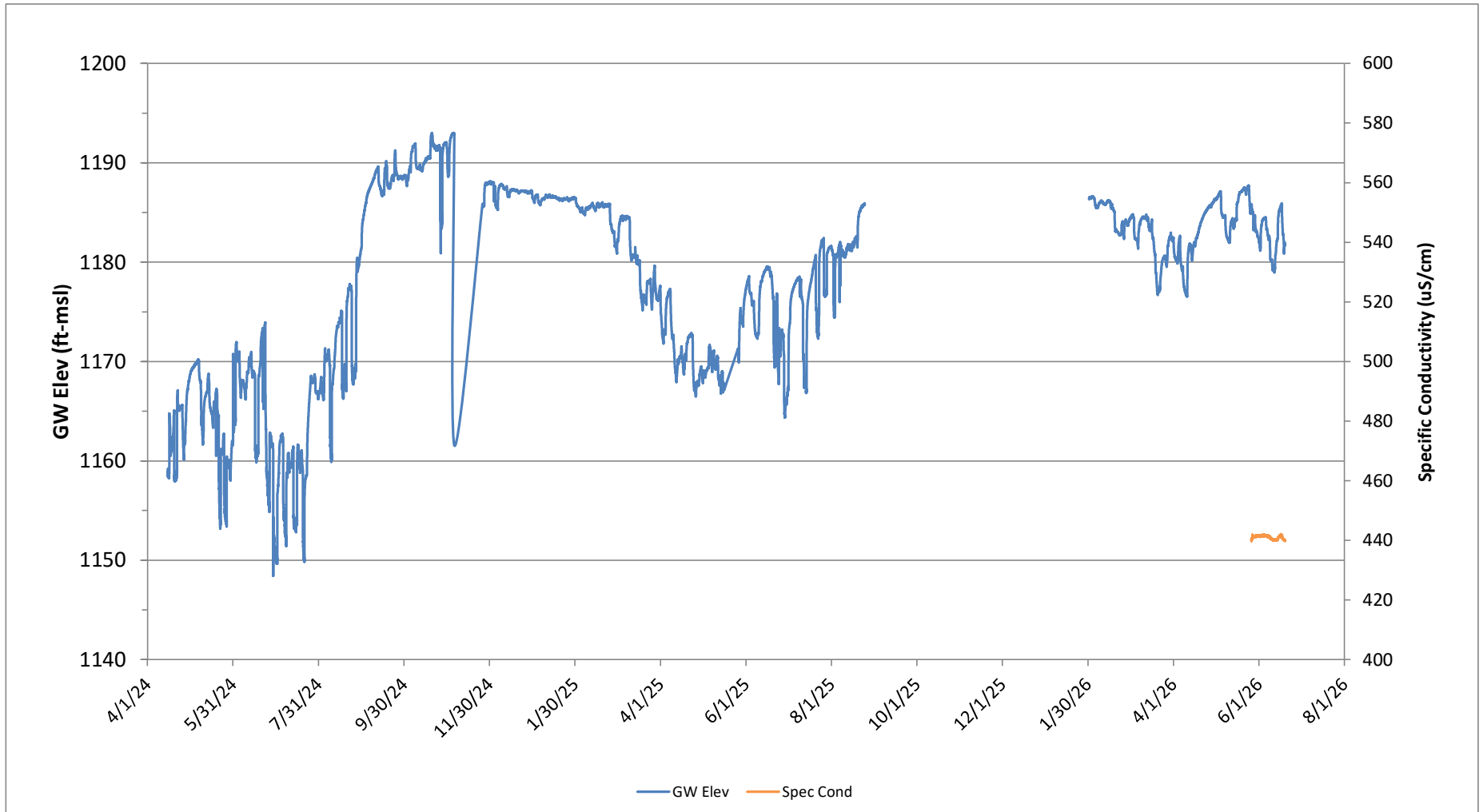


PRELIMINARY

6/22/2026

Permitted Well EH2B-01

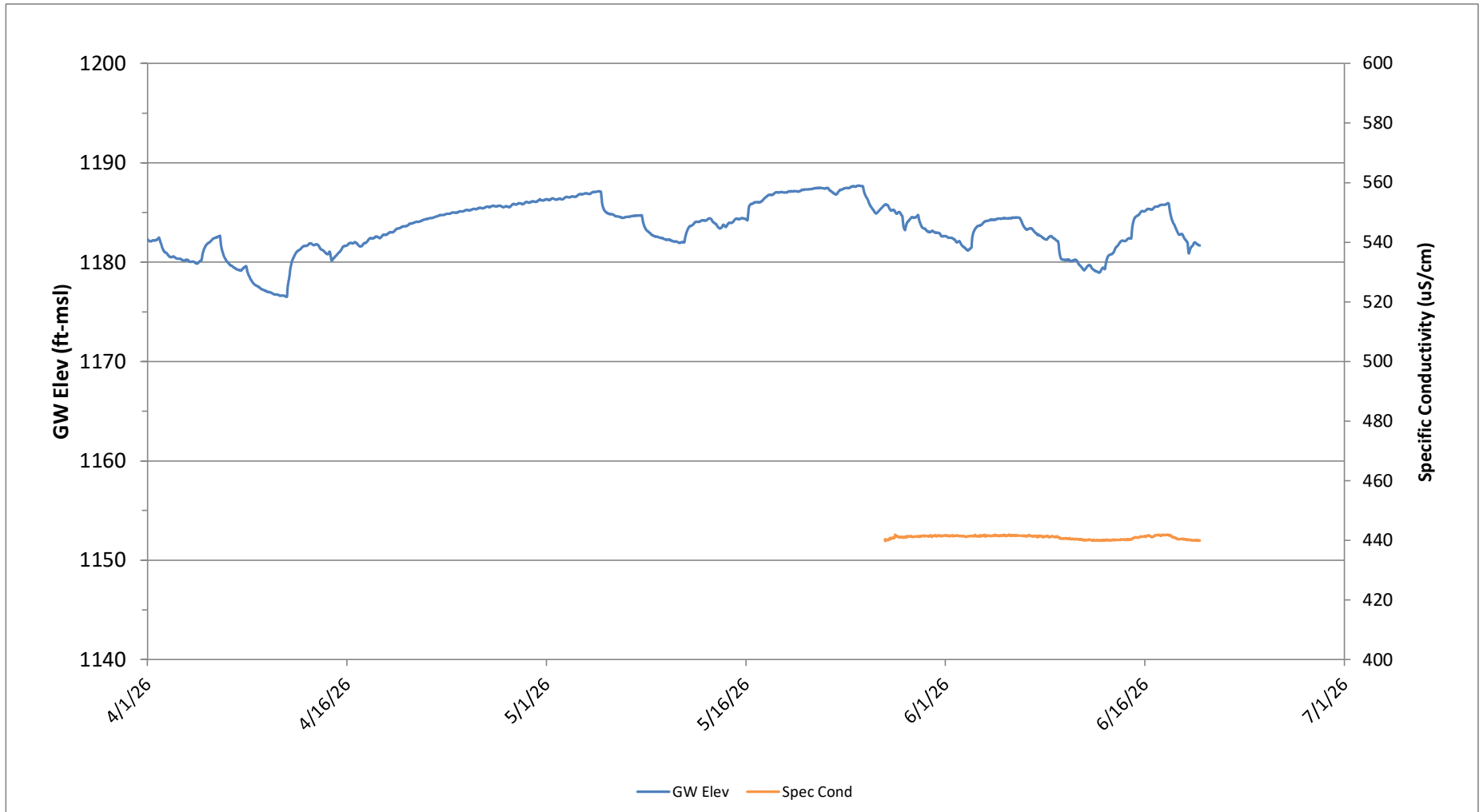
TD = 700 ft, RP = 1198 ft-msl, Edwards Trinity
Groundwater Elevation (ft-msl)



PRELIMINARY

Permitted Well EH2B-01

TD = 700 ft, RP = 1198 ft-msl, Edwards Trinity
Groundwater Elevation (ft-msl)

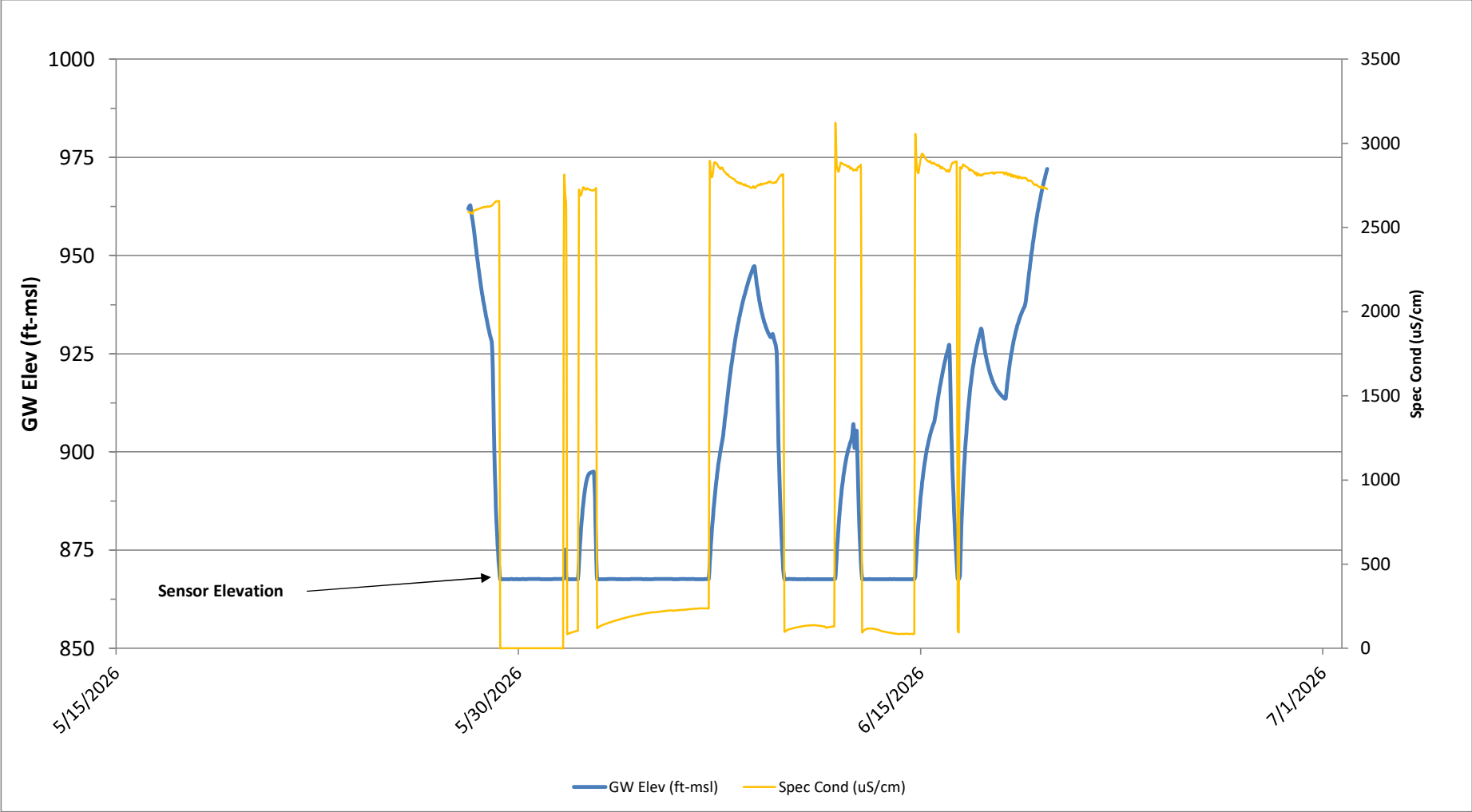


PRELIMINARY

Permitted Well EH03B-23

TD = 1800 ft, RP = 1055 ft-msl, Edwards Trinity - Sulfur, TWDB No. TBD

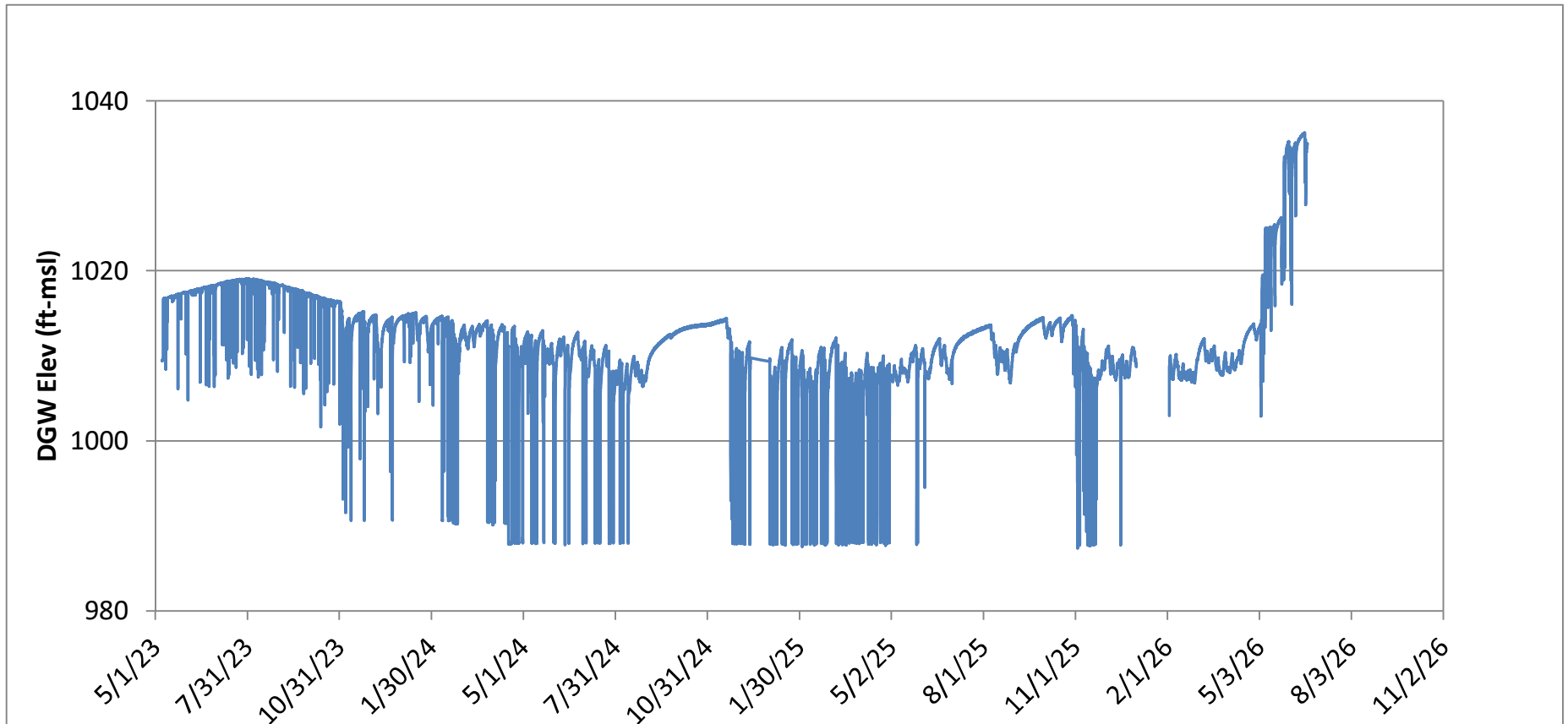
GW Elev (ft-msl)



PRELIMINARY

RS EH 11-02 (NE)

TD ~ 100 ft, RP = 1078 ft-msl, Austin Chalk
Groundwater Elev (ft-msl)

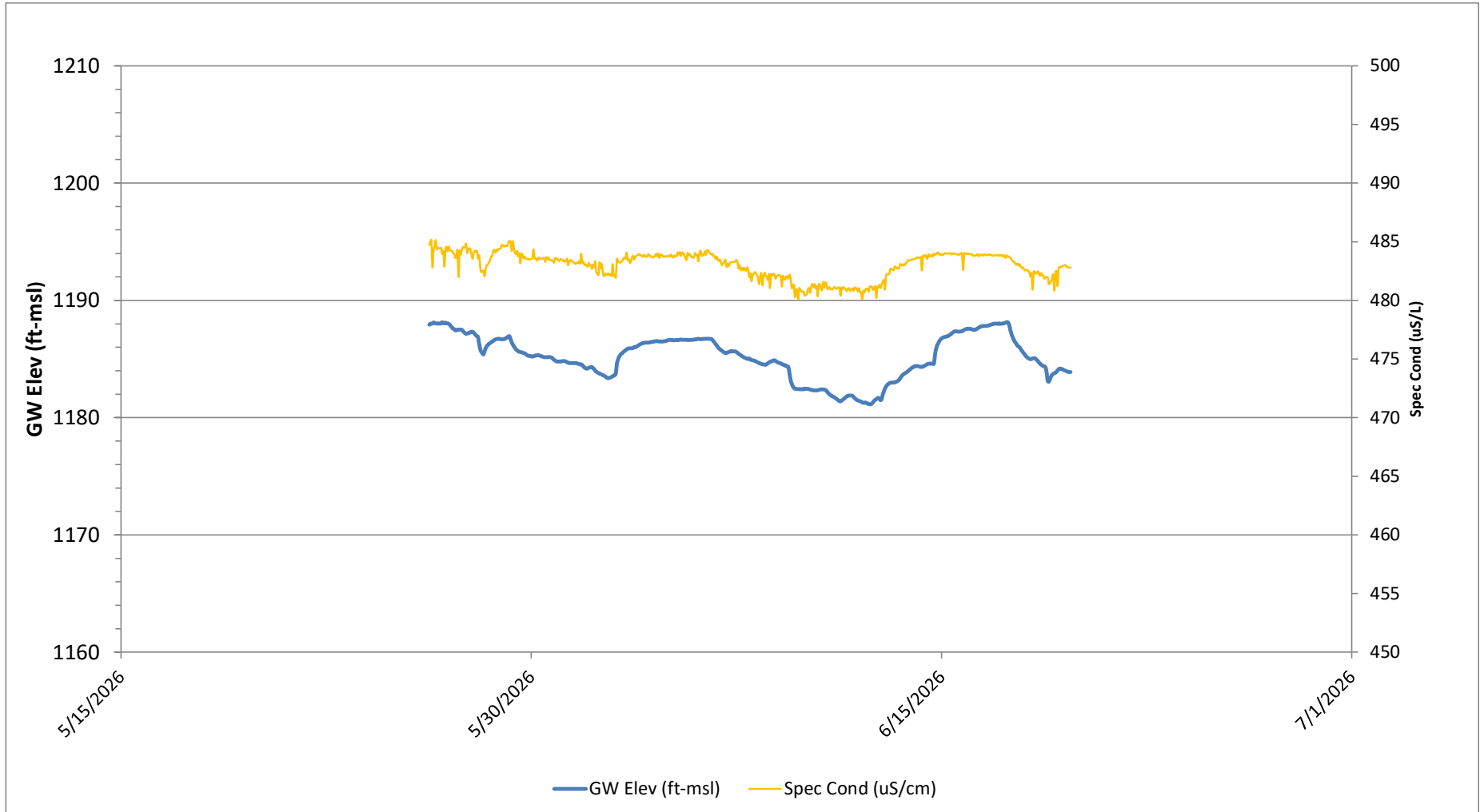


PRELIMINARY

Permitted Well EH33-03

TD = 800 ft, RP = 1201 ft-msl, TWDB No. TBD

GW Elev (ft-msl)

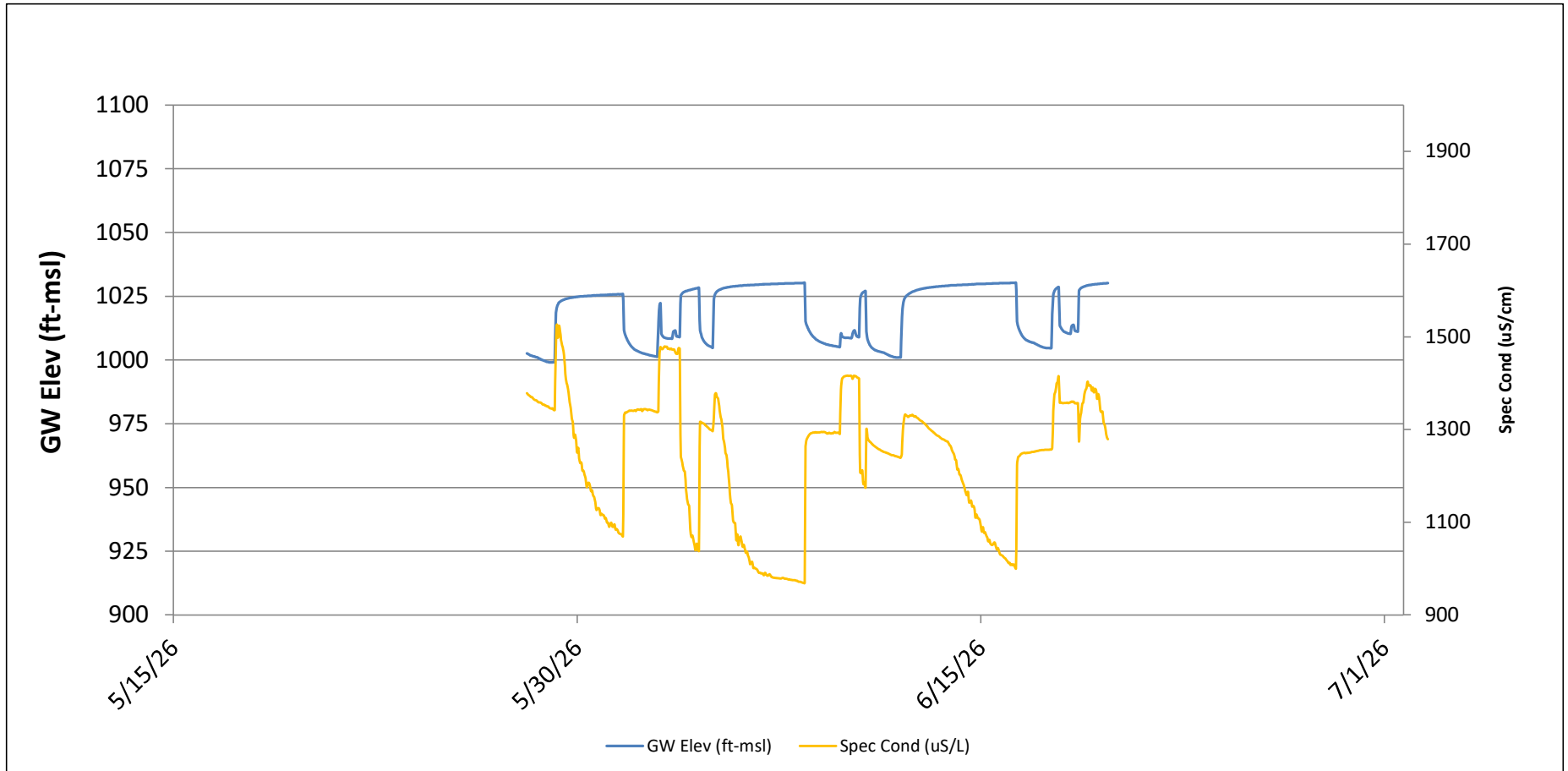


PRELIMINARY

Permitted Well EH38-05

TD = 250 ft, RP = 1085 ft-msl, Austin Chalk, TWDB No. TBD

Groundwater Elevation (ft-msl)

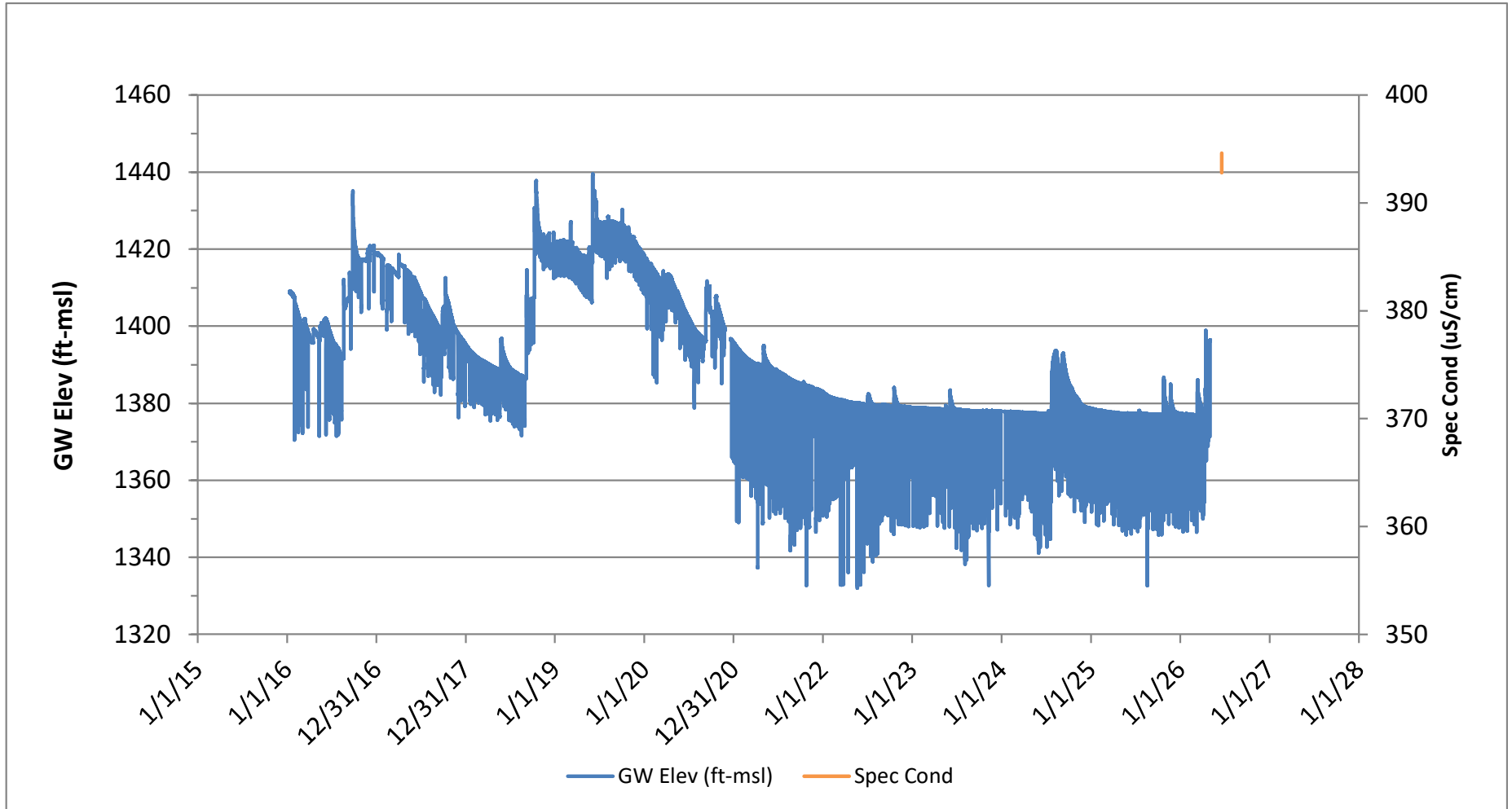


PRELIMINARY

Kickapoo Cavern State Park (Crownover)

TD = 502 ft, RP = 1634 ft-msl, TPO, TWDB No. 7029101

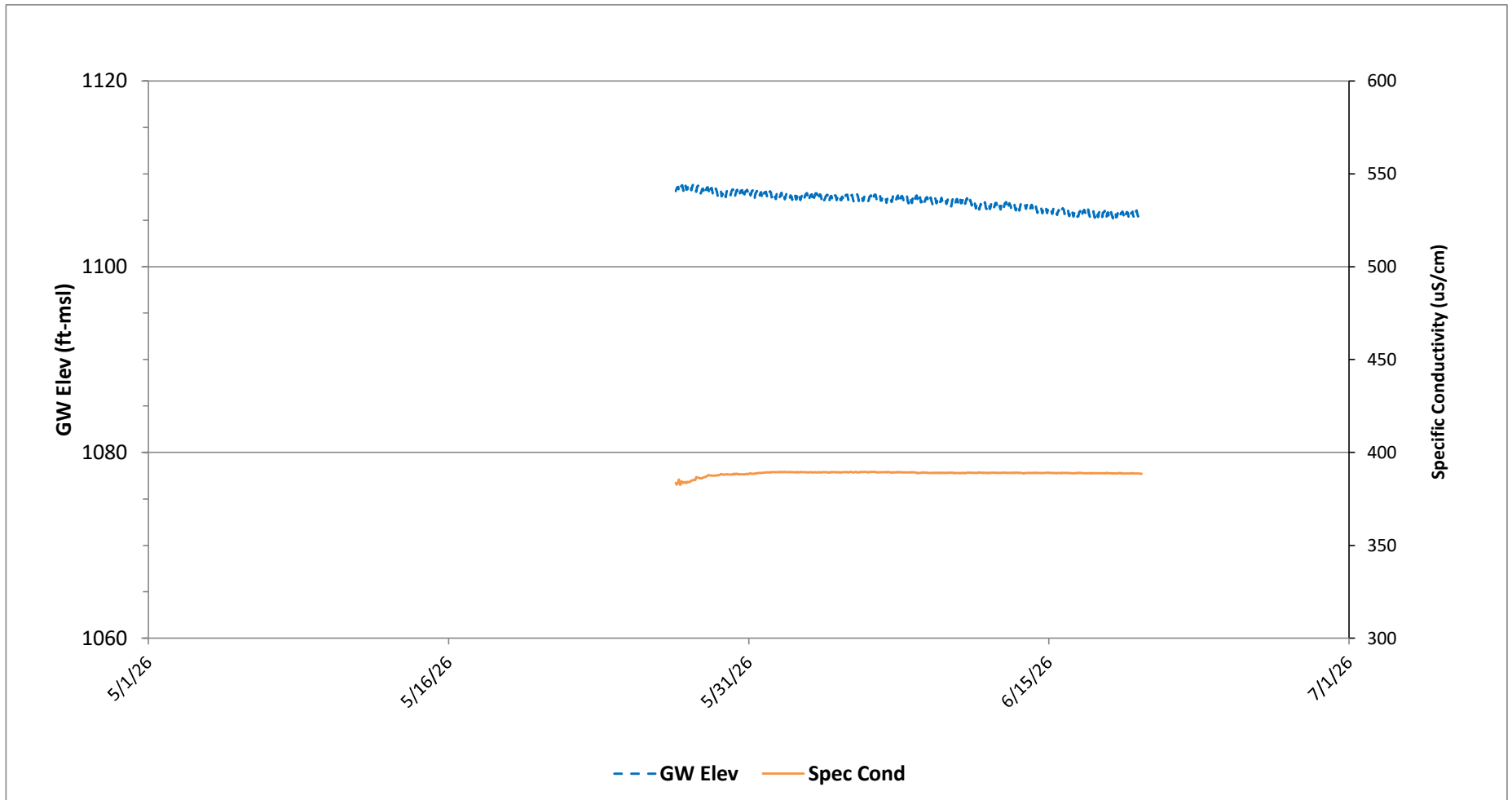
Groundwater Elevation (ft-msl)



PRELIMINARY

KC Easement

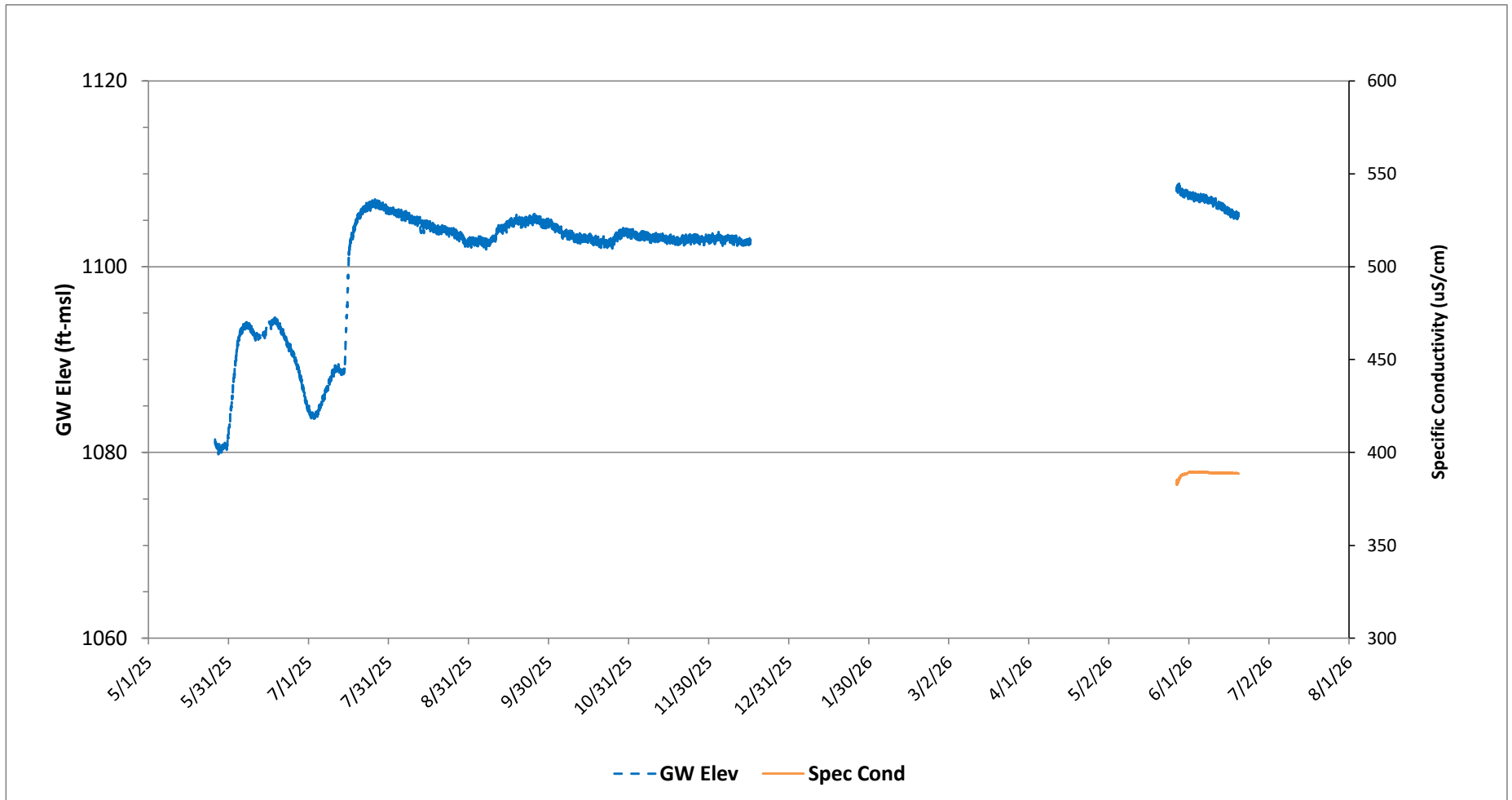
TD = ~ 1135 ft, RP = 1153 ft-msl, Edwards
Groundwater Elevation (ft-msl)



PRELIMINARY

KC Easement

TD = ~ 1135 ft, RP = 1153 ft-msl, Edwards
Groundwater Elevation (ft-msl)

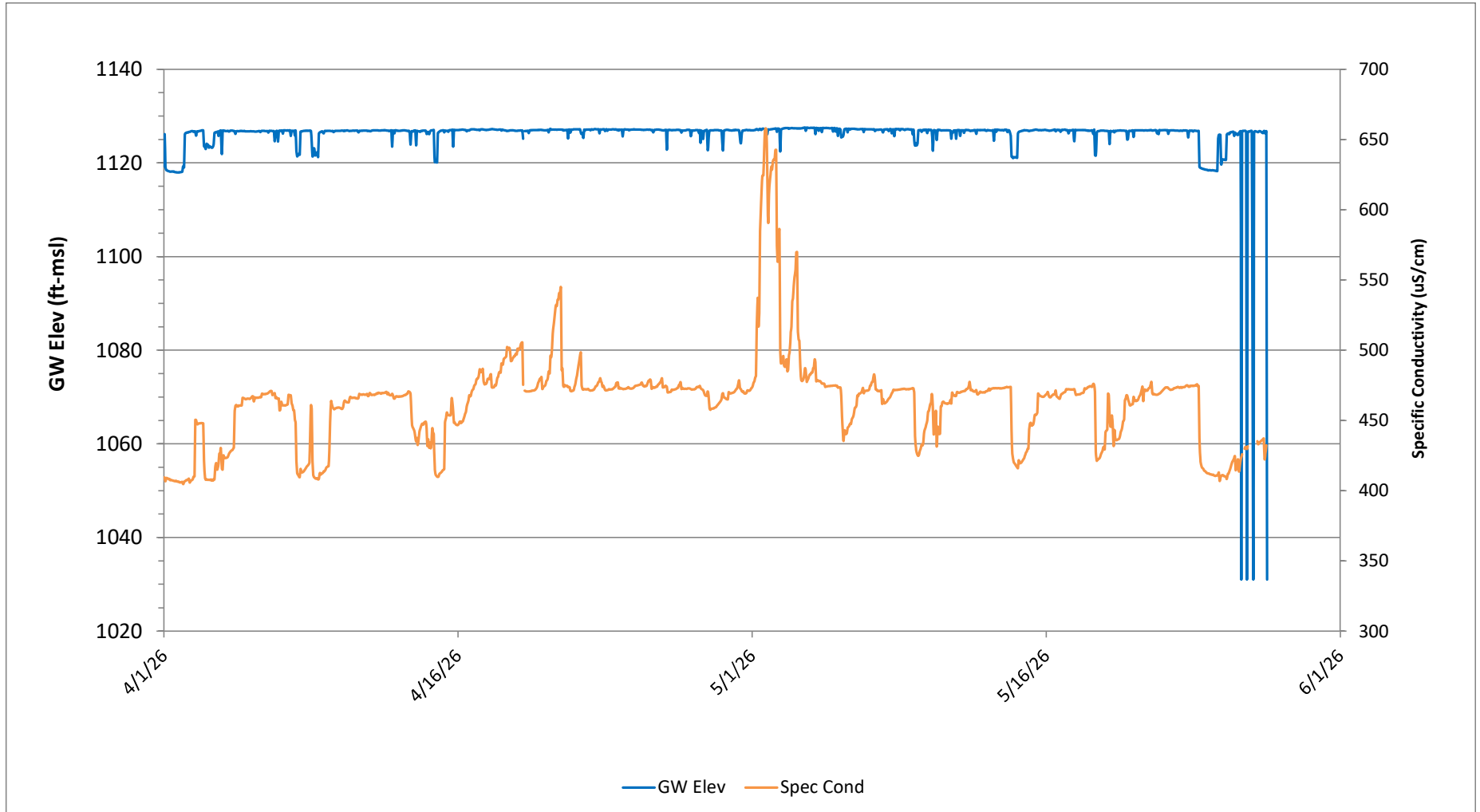


PRELIMINARY

MV - Camo Camp (GMA 10)

TD=TBD ft, RP = 1306 ft msl, Edwards

Groundwater Elevation (ft-msl)

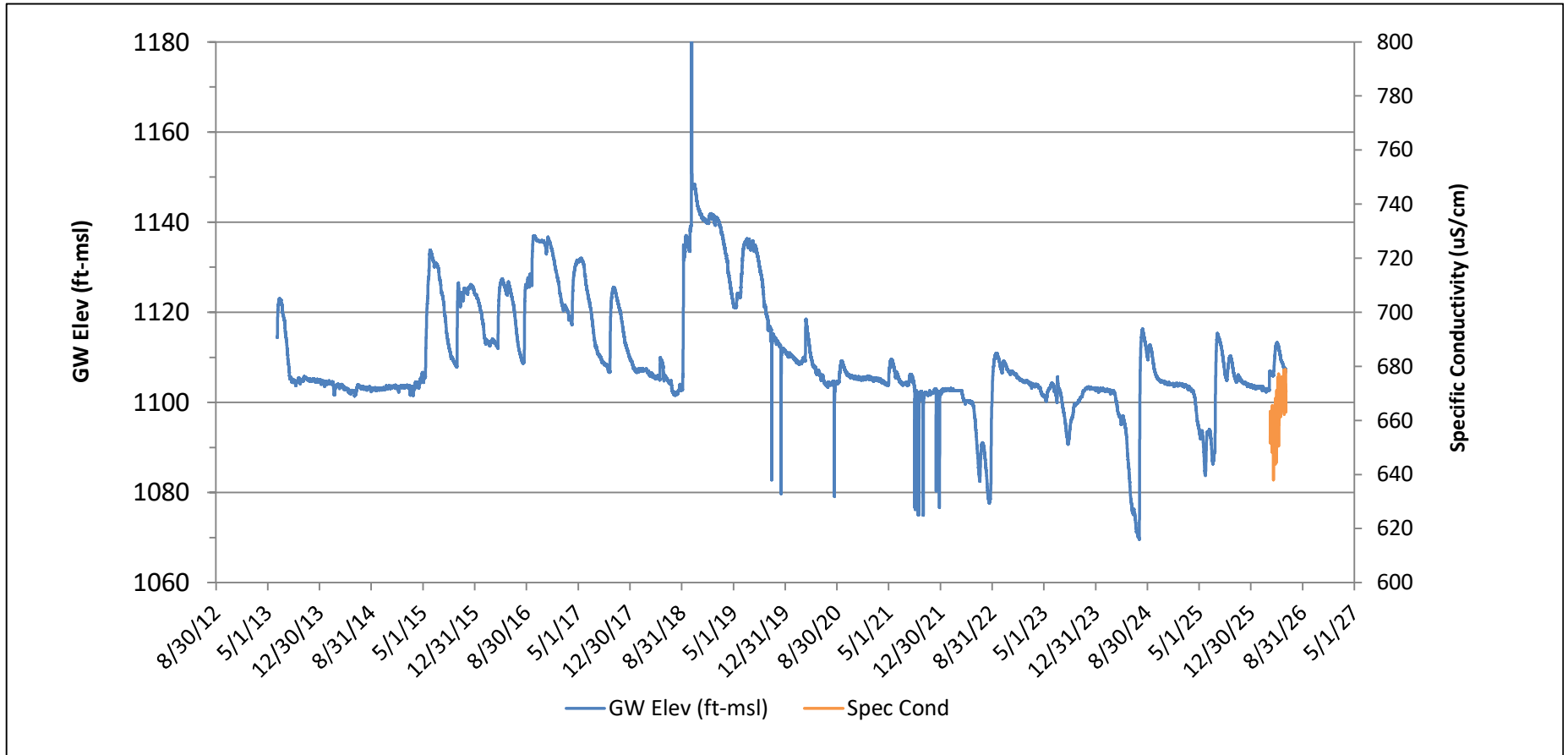


PRELIMINARY

Lindsey Monitoring Well

TD = 600 ft, RP = 1277 ft-msl, BFZ(s), TWDB No. 7046103

Groundwater Elevation (ft-msl)

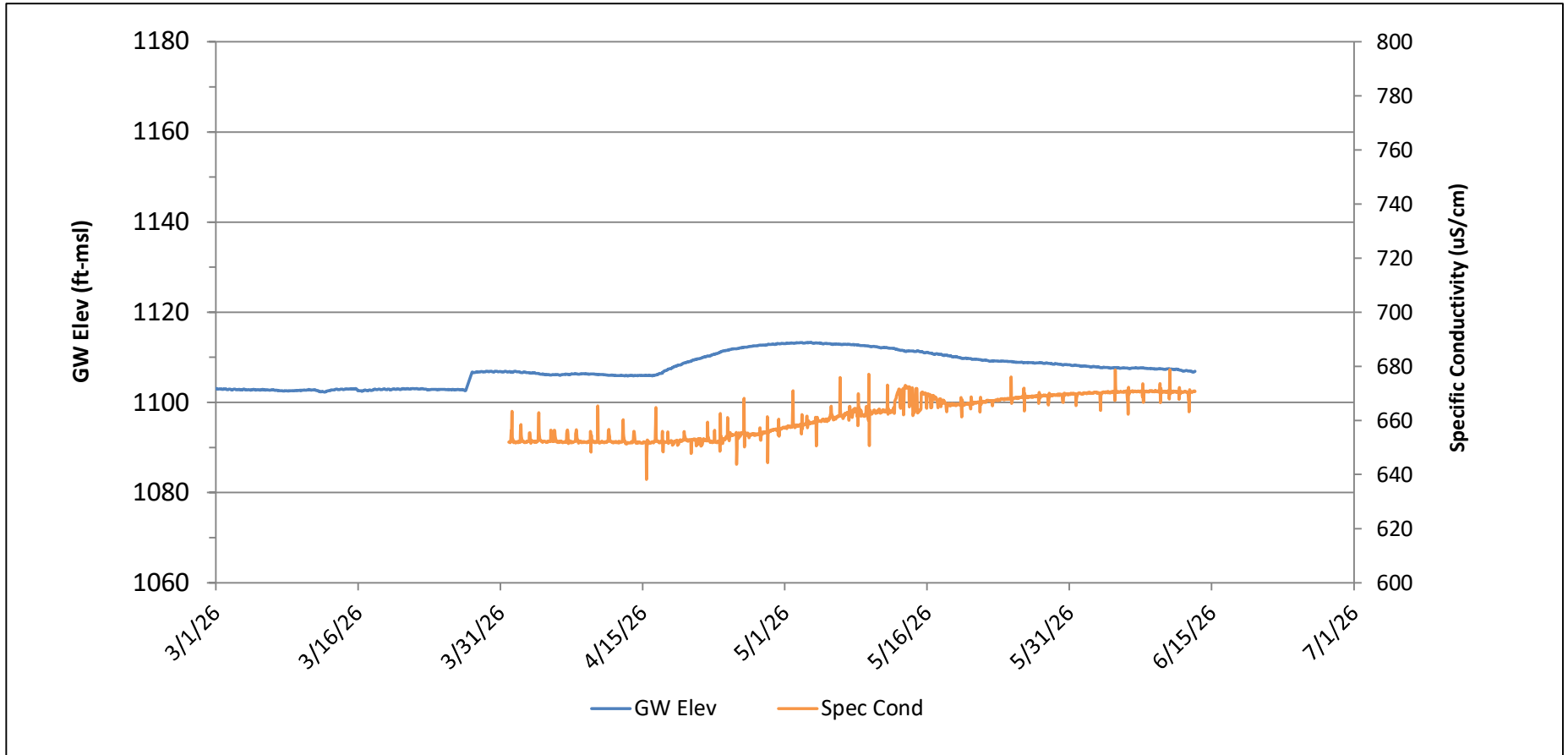


PRELIMINARY

Lindsey Monitoring Well

TD = 600 ft, RP = 1277 ft-msl, BFZ(s), TWDB No. 7046103

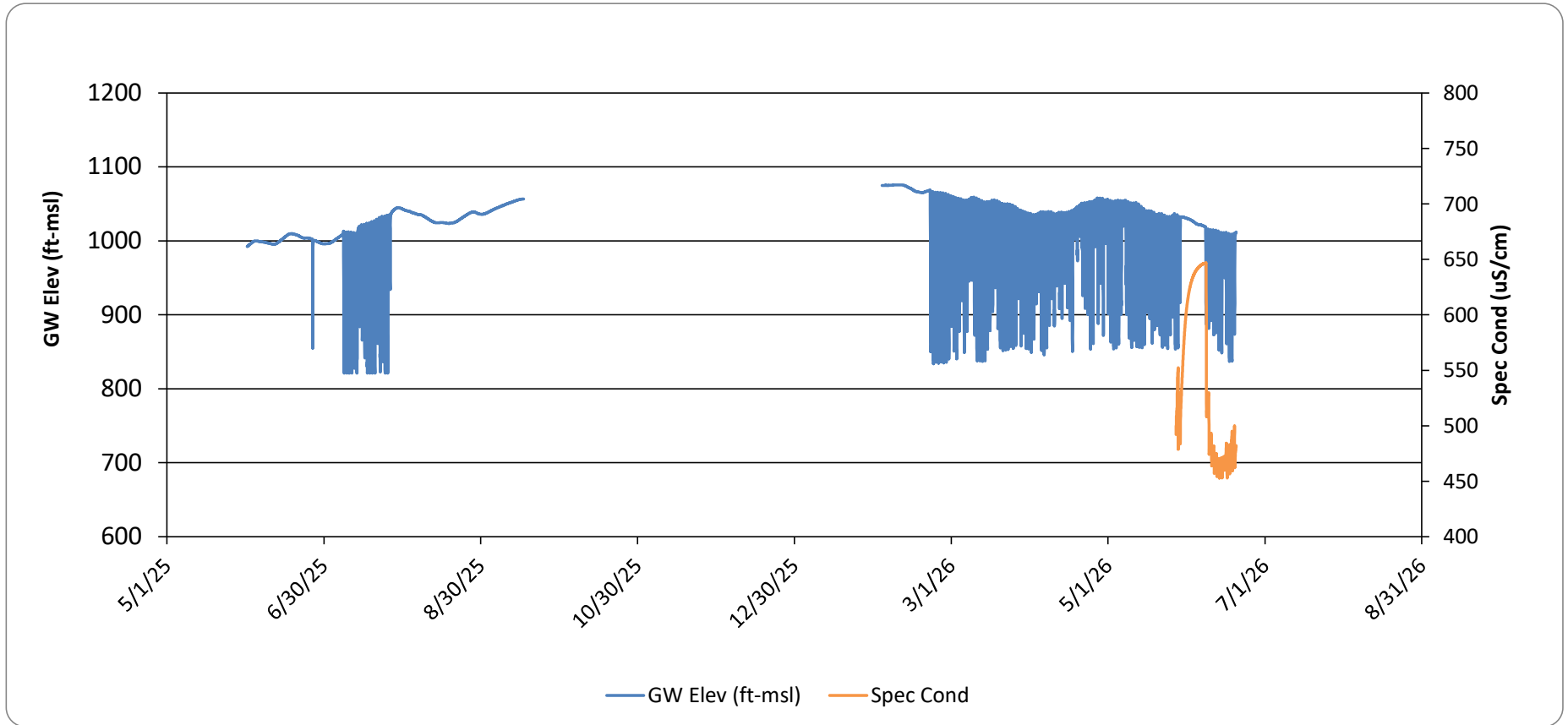
Groundwater Elevation (ft-msl)



PRELIMINARY

RS Old Windmill

TD = 485 ft, RP = 1094 ft-msl, Edwards?
Groundwater Elev (ft-msl)

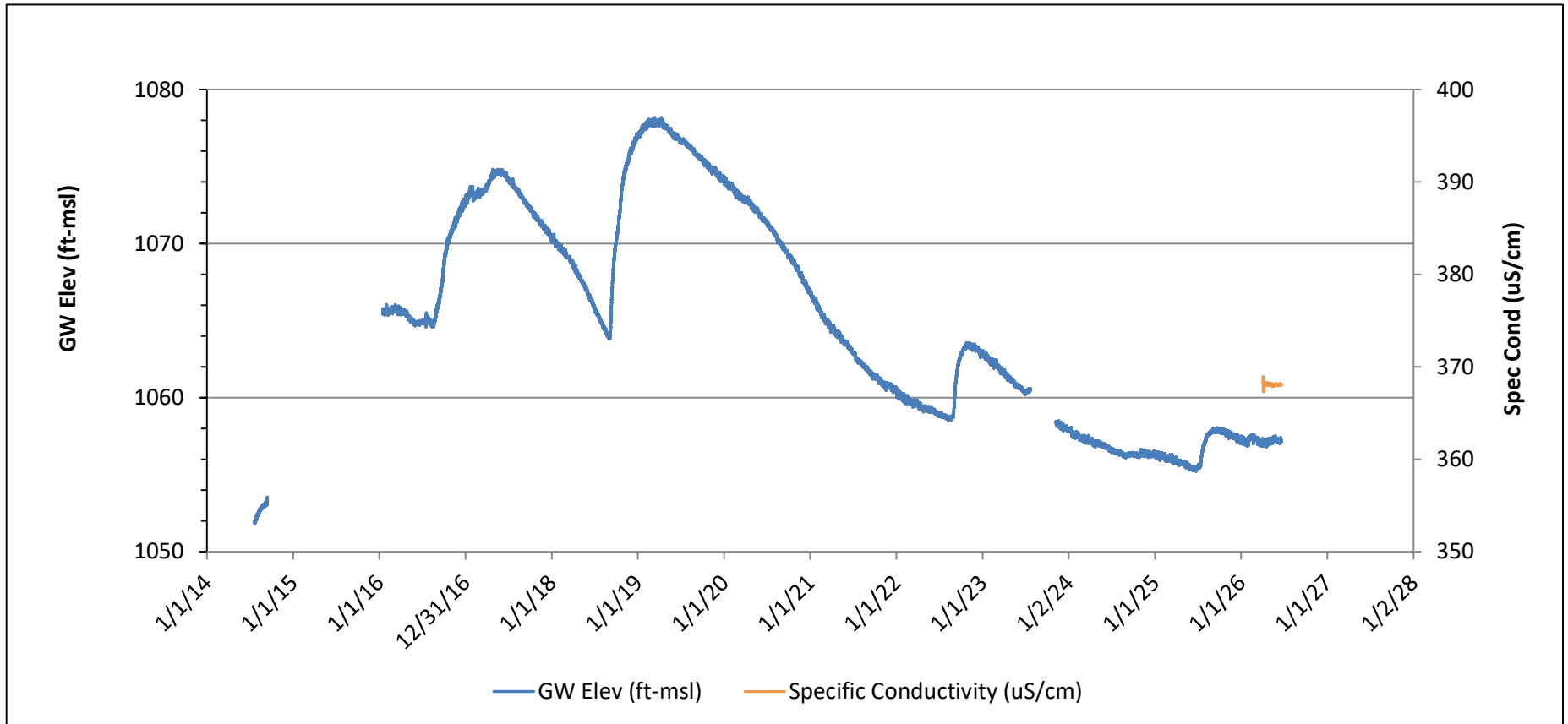


PRELIMINARY

TXDOT East Elm 2 (GMA 10)

TD = 376 ft, RP = 1086 ft-msl, BFZ(s), TWDB No. 7046802

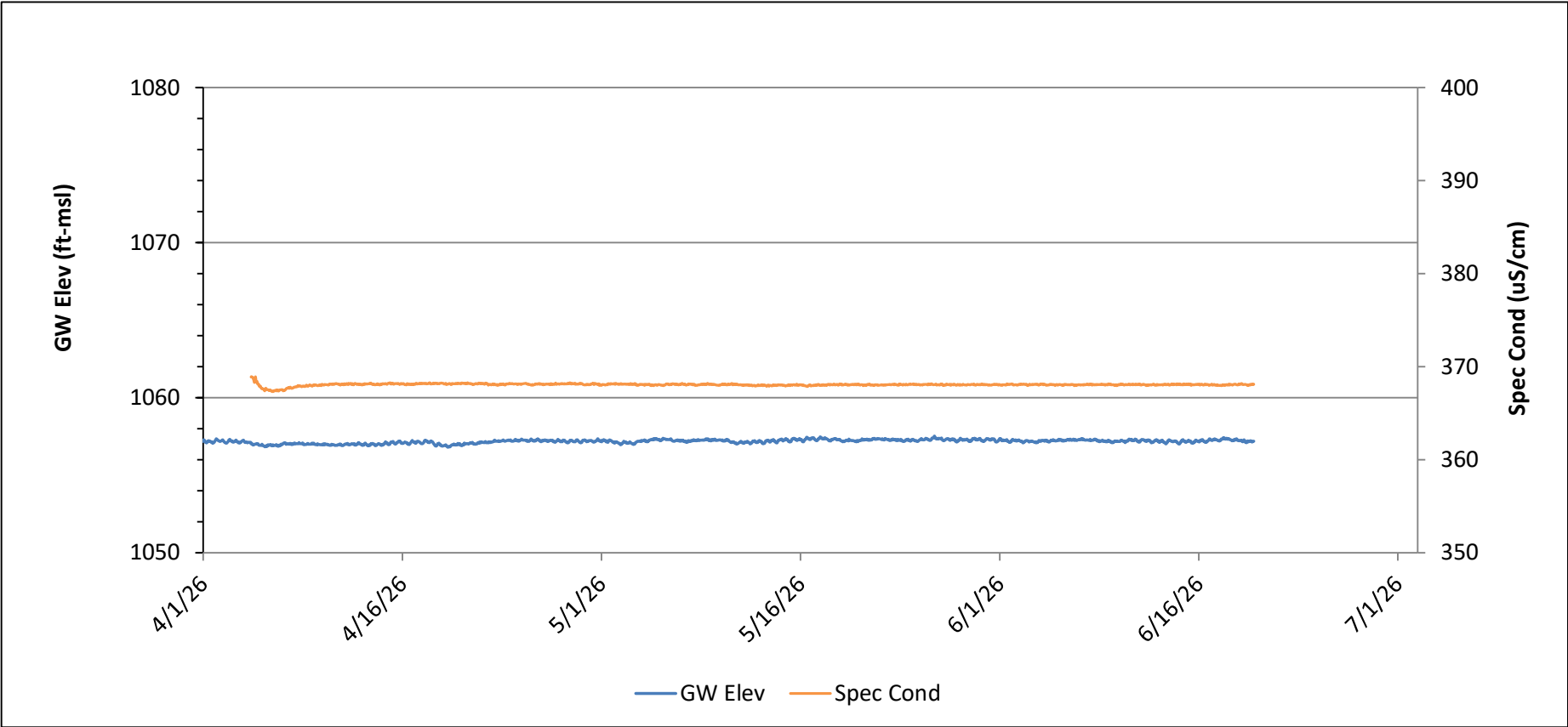
Groundwater Elevation (ft-msl)



PRELIMINARY

TXDOT East Elm 2 (GMA 10)

TD = 376 ft, RP = 1086 ft-msl, BFZ(s), TWDB No. 7046802
Groundwater Elevation (ft-msl)



PRELIMINARY